

WJ Radiator Support - DIY Assembly

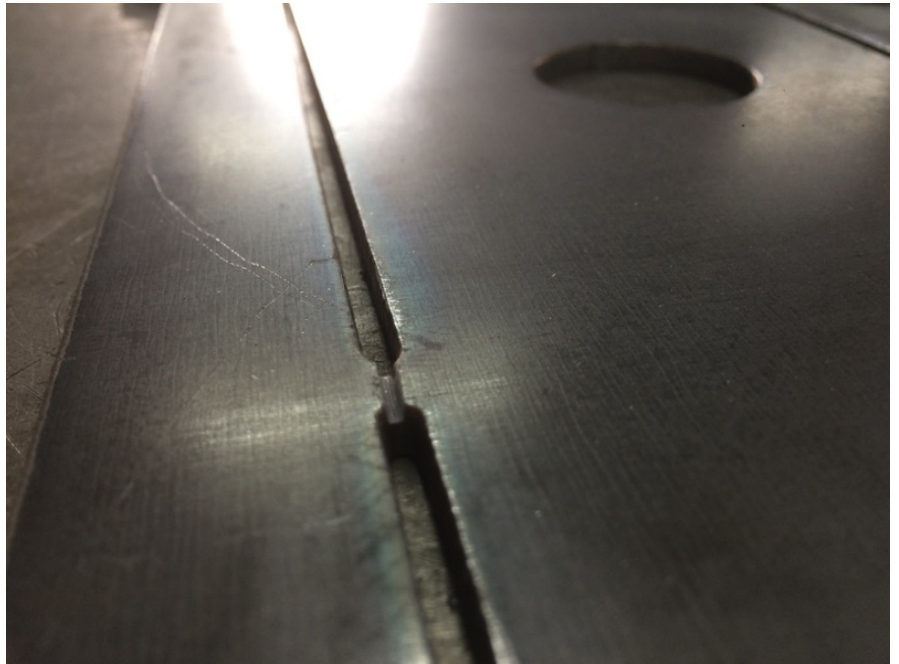
1999-2004 Jeep Grand Cherokee WJ
Part number: DPL-WJ-RSP, Revision 3/30/18

This is the DIY Assembly instructions. After assembly, see Radiator Support installation instructions.

Step 1: Ensure you bend primary body the correct direction. The two holes at one end go on the drivers side, and the long face towards the front.

Step 2: We recommend scoring the outside of each bend tab about halfway through to ease the hand bending process and keep the weld gaps smaller.

Step 3: Bend four sides up until the edges align. The overall width is set by two small locating tabs that line up with the top plate. Ensure these line up before welding.



Step 4: Tack weld edges on the body. You can fully weld body first then attach top plate, or tack everything and weld at once. Just be sure to not burn it together too fast and hot as it may distort. Tabs on body align with slots in top plate.

Step 5: Weld all seams. We strongly suggest stitch welding segments to avoid warping. NOTE: We suggest welding the inside of the centermost portion of the body/top plate joint to avoid potential interference with hardware.

Step 6: Clean weld areas, primer and paint.

